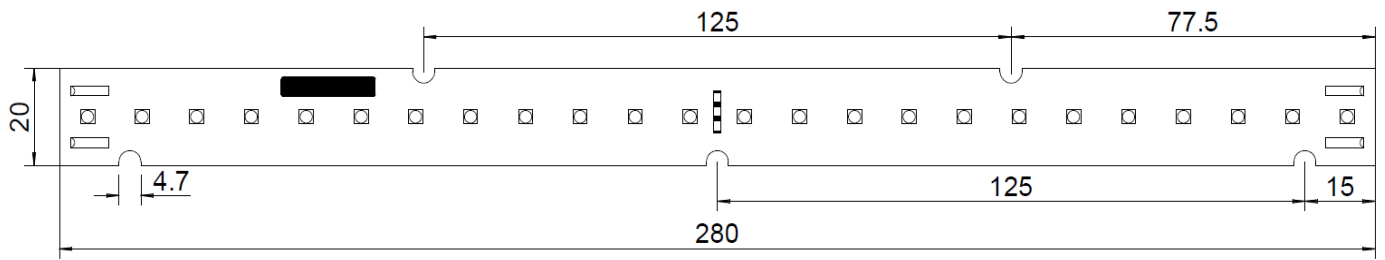


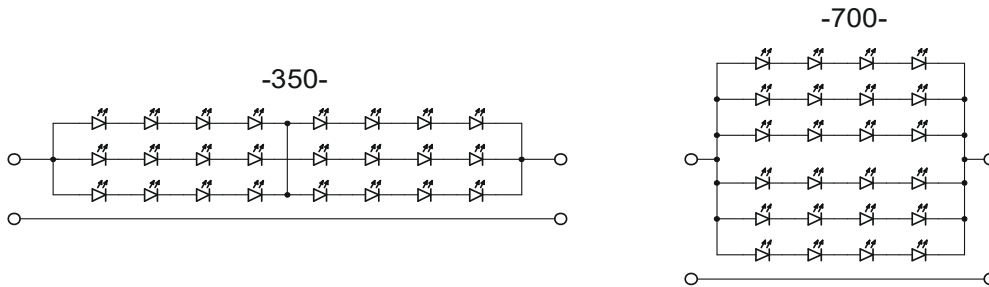
# A2820L24

## STANDARD

### Technical drawing



### Circuit diagram



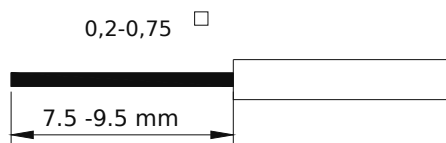
### Product features

- Standard Deviation Colour Matching (SDCM) < 3
- Improved spring terminals

- Maximum current • 450 / 900 mA\*
- Maximum temperature  $T_c$  • +85°C
- Minimum ambient temperature • -20°C
- Lifetime (according to L80B10) • > 61 000 h

\*according to circuit configurations: 350 mA/700 mA

### Connection wire requirements



# A2820L24

## STANDARD

CODE	Ra	CCT [K]	Supply current [mA]	Average forward voltage [V]	Luminous flux [lm]	Luminous efficacy [lm/W]	Power [W]		
A2820L48-350-827G	80	2700	350	22,3	1200	156	7,8		
A2820L48-700-827G			700	11,2					
A2820L48-350-827K			350	22,0	1250	166	7,6		
A2820L48-700-827K			700	11,0					
A2820L48-350-830G		3000	2700	350	22,3	1250	161	7,8	
A2820L48-700-830G				700	11,2				
A2820L48-350-830K			3000	3000	350	22,0	1300	171	7,6
A2820L48-700-830K					700	11,0			
A2820L48-350-830L			3000	3000	350	21,9	1450	193	7,6
A2820L48-700-830L					700	11,0			
A2820L48-350-840G		4000	2700	350	22,3	1300	169	7,8	
A2820L48-700-840G				700	11,2				
A2820L48-350-840K			4000	4000	350	22,0	1350	179	7,6
A2820L48-700-840K					700	11,0			
A2820L48-350-840L			4000	4000	350	21,9	1450	193	7,6
A2820L48-700-840L					700	11,0			
A2820L48-350-850G			5000	2700	350	22,3	1300	171	7,8
A2820L48-700-850G					700	11,2			
A2820L48-350-850K		5000		5000	350	22,0	1350	181	7,6
A2820L48-700-850K					700	11,0			
A2820L48-350-850L	5000	5000		350	21,9	1450	193	7,6	
A2820L48-700-850L				700	11,0				
A2820L48-350-927G	90	2700	350	22,3	1000	133	7,8		
A2820L48-700-927G			700	11,2					
A2820L48-350-930G		3000	3000	350	22,3	1050	137	7,8	
A2820L48-700-930G				700	11,2				
A2820L48-350-940G		4000	4000	350	22,3	1100	144	7,8	
A2820L48-700-940G				700	11,2				

The above data refers to average parametres valid in Tj=25 °C