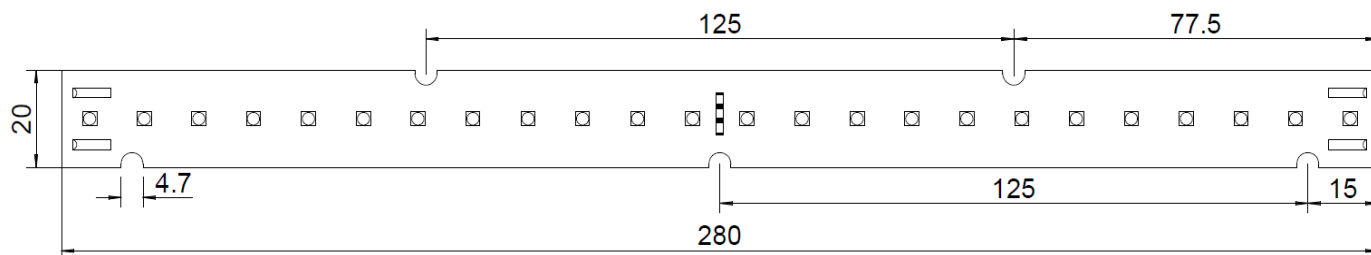


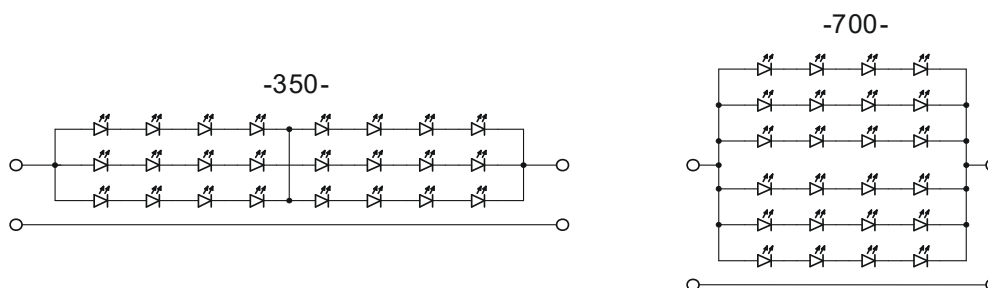
# A2820L24

## STANDARD

### Rysunek techniczny



### Schemat elektryczny

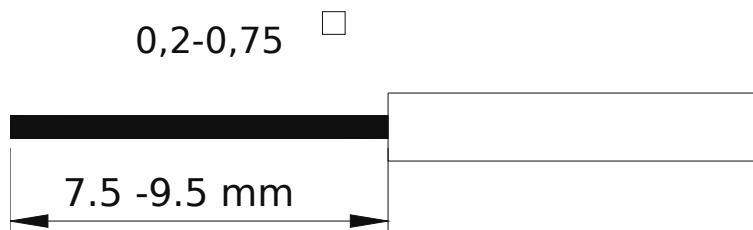


### Parametry produktu

- Powtarzalność barwy < 3 SDCM
- Aluminiowe podłoże
- Ulepszone złącza sprężynowe

- Prąd maksymalny • 450 / 900 mA \*
- Maksymalna temperatura  $T_c$  • +85 °C
- Minimalna temperatura otoczenia • -20 °C
- Czas życia L80B10 • > 61 000 h
- \* konfiguracja prądowa: 350 mA / 700 mA

### Przygotowanie przewodu połączeniowego



# A2820L24

## STANDARD

| KOD               | Ra   | Temperatura barwowa [K] | Prąd zasilania [mA] | Typowe napięcie przewodzenia [V] | Strumień świetlny [lm] | Sprawność [lm/W] | Moc [W] |     |     |
|-------------------|------|-------------------------|---------------------|----------------------------------|------------------------|------------------|---------|-----|-----|
| A2820L48-350-827G | 80   | 2700                    | 350                 | 22,3                             | 1200                   | 156              | 7,8     |     |     |
| A2820L48-700-827G |      |                         | 700                 | 11,2                             |                        |                  |         |     |     |
| A2820L48-350-827K |      |                         | 350                 | 22,0                             | 1250                   | 166              | 7,6     |     |     |
| A2820L48-700-827K |      |                         | 700                 | 11,0                             |                        |                  |         |     |     |
| A2820L48-350-830G |      | 3000                    | 2700                | 350                              | 22,3                   | 1250             | 161     | 7,8 |     |
| A2820L48-700-830G |      |                         |                     | 700                              | 11,2                   |                  |         |     |     |
| A2820L48-350-830K |      |                         | 3000                | 2700                             | 350                    | 22,0             | 1300    | 171 | 7,6 |
| A2820L48-700-830K |      |                         |                     |                                  | 700                    | 11,0             |         |     |     |
| A2820L48-350-830L |      |                         | 3000                | 2700                             | 350                    | 21,9             | 1450    | 193 | 7,6 |
| A2820L48-700-830L |      |                         |                     |                                  | 700                    | 11,0             |         |     |     |
| A2820L48-350-840G |      | 4000                    | 2700                | 350                              | 22,3                   | 1300             | 169     | 7,8 |     |
| A2820L48-700-840G |      |                         |                     | 700                              | 11,2                   |                  |         |     |     |
| A2820L48-350-840K |      |                         | 4000                | 2700                             | 350                    | 22,0             | 1350    | 179 | 7,6 |
| A2820L48-700-840K |      |                         |                     |                                  | 700                    | 11,0             |         |     |     |
| A2820L48-350-840L |      |                         | 4000                | 2700                             | 350                    | 21,9             | 1450    | 193 | 7,6 |
| A2820L48-700-840L |      |                         |                     |                                  | 700                    | 11,0             |         |     |     |
| A2820L48-350-850G |      |                         | 5000                | 2700                             | 350                    | 22,3             | 1300    | 171 | 7,8 |
| A2820L48-700-850G |      |                         |                     |                                  | 700                    | 11,2             |         |     |     |
| A2820L48-350-850K |      | 5000                    |                     | 2700                             | 350                    | 22,0             | 1350    | 181 | 7,6 |
| A2820L48-700-850K |      |                         |                     |                                  | 700                    | 11,0             |         |     |     |
| A2820L48-350-850L | 5000 | 2700                    |                     | 350                              | 21,9                   | 1450             | 193     | 7,6 |     |
| A2820L48-700-850L |      |                         |                     | 700                              | 11,0                   |                  |         |     |     |
| A2820L48-350-927G | 90   | 2700                    | 350                 | 22,3                             | 1000                   | 133              | 7,8     |     |     |
| A2820L48-700-927G |      |                         | 700                 | 11,2                             |                        |                  |         |     |     |
| A2820L48-350-930G |      | 3000                    | 2700                | 350                              | 22,3                   | 1050             | 137     | 7,8 |     |
| A2820L48-700-930G |      |                         |                     | 700                              | 11,2                   |                  |         |     |     |
| A2820L48-350-940G |      | 4000                    | 2700                | 350                              | 22,3                   | 1100             | 144     | 7,8 |     |
| A2820L48-700-940G |      |                         |                     | 700                              | 11,2                   |                  |         |     |     |

Podane parametry odnoszą się do wartości typowych dla  $T_j=25^{\circ}\text{C}$